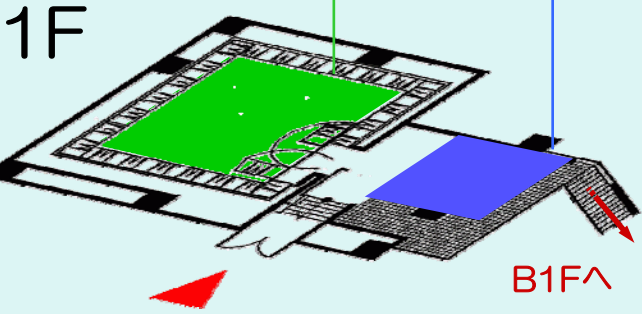


◆楽器のシミュレーション
Virtual Instruments - Organ



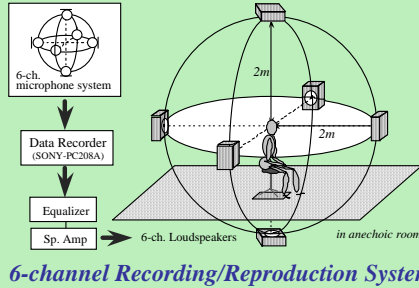
1F - バーチャルオルガン体験



◆残響時間の弁別閾に関する評価実験
Subjective test for the differential threshold of reverberation time

◆車室内の音環境評価
Evaluation of acoustical environment in a passenger-car

◆スピーチプライバシーのための音環境づくり
Sound environment for speech privacy



6-channel Recording/Reproduction System

4π無響室内 - デモンストレーション

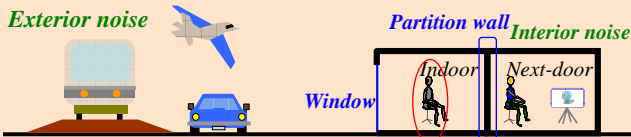


音場の物理・数値シミュレーション

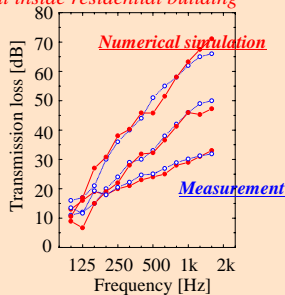
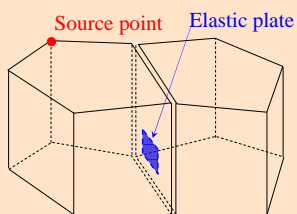
Physical / Numerical Simulation of Sound Field

応用音響工学研究室
Applied Acoustic Engineering Lab.

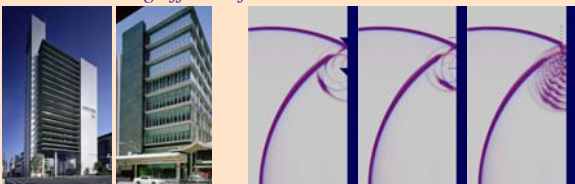
◆建築壁体の遮音性能の数値シミュレーション
Numerical simulation on sound insulation performance of wall system in building



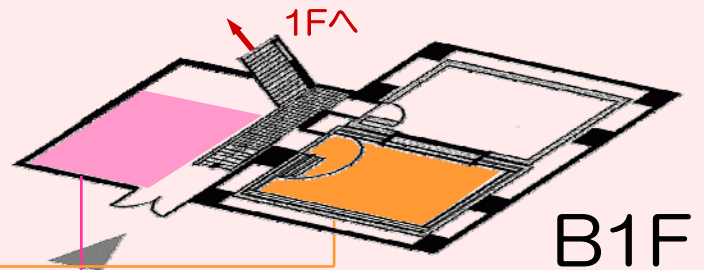
Sound environment inside residential building



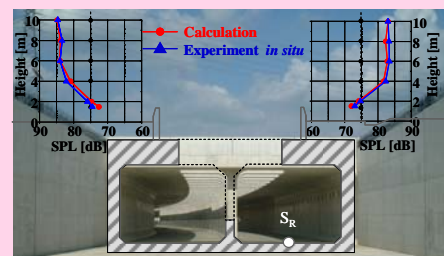
◆建物外壁の庇による騒音低減効果
Noise shielding effects of eaves/louvers attached on building facade



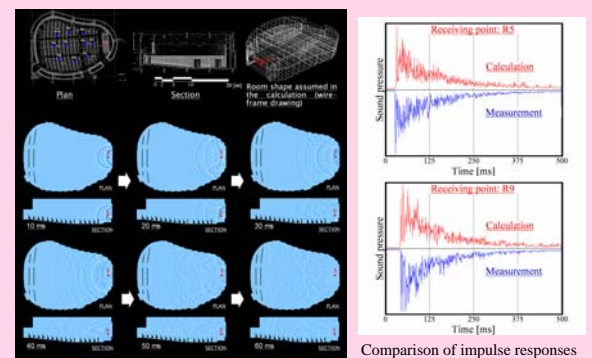
2π無響室内 - デモ&パネル展示



◆屋外騒音予測に対する応用
Application to outdoor noise prediction



◆室内音場予測に対する応用
Application to analysis of room sound field



Comparison of impulse responses

B1F - パネル展示